

Contestant Number

Using the photography principles described in the Communications in Agriculture textbook, please place the following photos of wheat ready to harvest. Record your placing on the Scantron, and then use Microsoft Word to write your reasons.



Photo 1



Photo 2



Photo 3



Photo 4

Photo Class Name _____

Chapter _____

Using the principles of photography, place the following photos in order from best to worst.
Record your placing in the following boxes and on the scantron.



Photo 1



Photo 2



Photo 3



Photo 4

Photo Class
Agricultural Communications
Career Development Event

A photographer was asked to take photos for a story about custom wheat harvesters working in the area. Which photo would be best to accompany this story?

Using the provided FFA placing card, please place this class of photos (1 = Best Photo; 4 = Worst Photo).



Photo 1



Photo 3



Photo 2



Photo 4

Class 1: Photos

Name _____

Chapter _____

Contestant Number _____

Using photographic principles described in the Communications in Agriculture textbook, place these photos. Fill the corresponding bubble on the Scantron sheet to place the class. See additional information sheet for writing reasons.



Photo 1



Photo 2



Photo 3

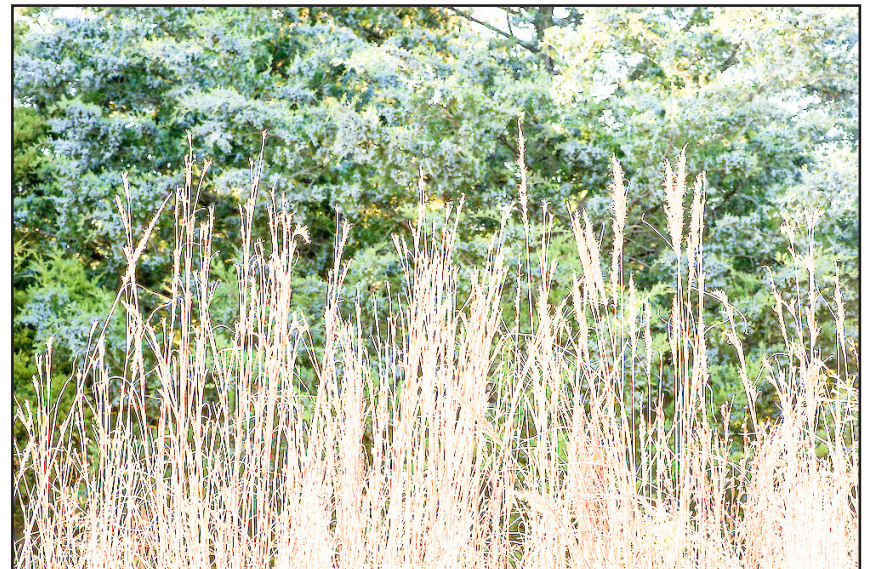


Photo 4



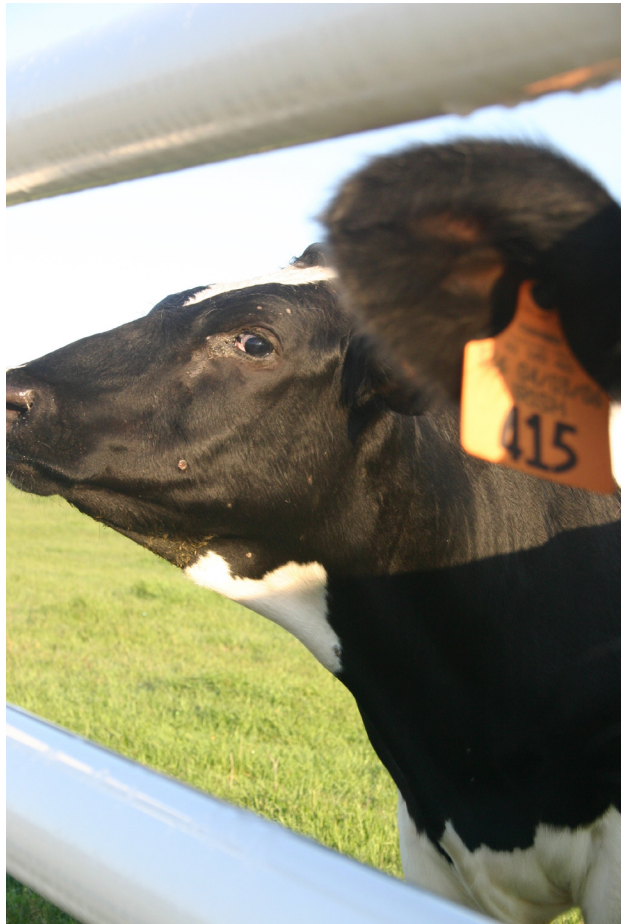
1



2



3



4

Photos

I place these news story photos 2-3-1-4.

In my top pair of photos, I placed number 2 over number 3 because it better uses the light, lines and angles. Number 2 provides a unique perspective of the dairy calf, with the fenceline used as a guide into the photo and toward the calf, which is not in the center of the photo. Fewer distracting elements are around the calf in number 2, although I do grant that number 3 has better contrasts in colors.

Moving to my middle pair, I placed number 3 over number 1 because an animal is used in number 3 and the lighting provides for better coloring of the sky, grass and calf. Number 1 is not in focus and a power line is visible in the upper left corner of the photo, although I do grant it better uses the rule of thirds than number 3.

In my final pair, I placed number 1 over number 4 because number 1 has fewer distracting elements than number 4. Number 1 uses the rule of thirds to clearly represent the dairy farm facilities. I do grant, however, that number 4 is more in focus and has better lighting, although the angle of the calf head and presence of the ear of another calf moves it to the bottom of the set.

Photo Class Name _____

Chapter _____

Using the principles of layout described in the Communications in Agriculture textbook, place the following photos. Write your placing in the following boxes and record on the scantron.



Photo 1

Photo 2



Photo 3

Photo 4

